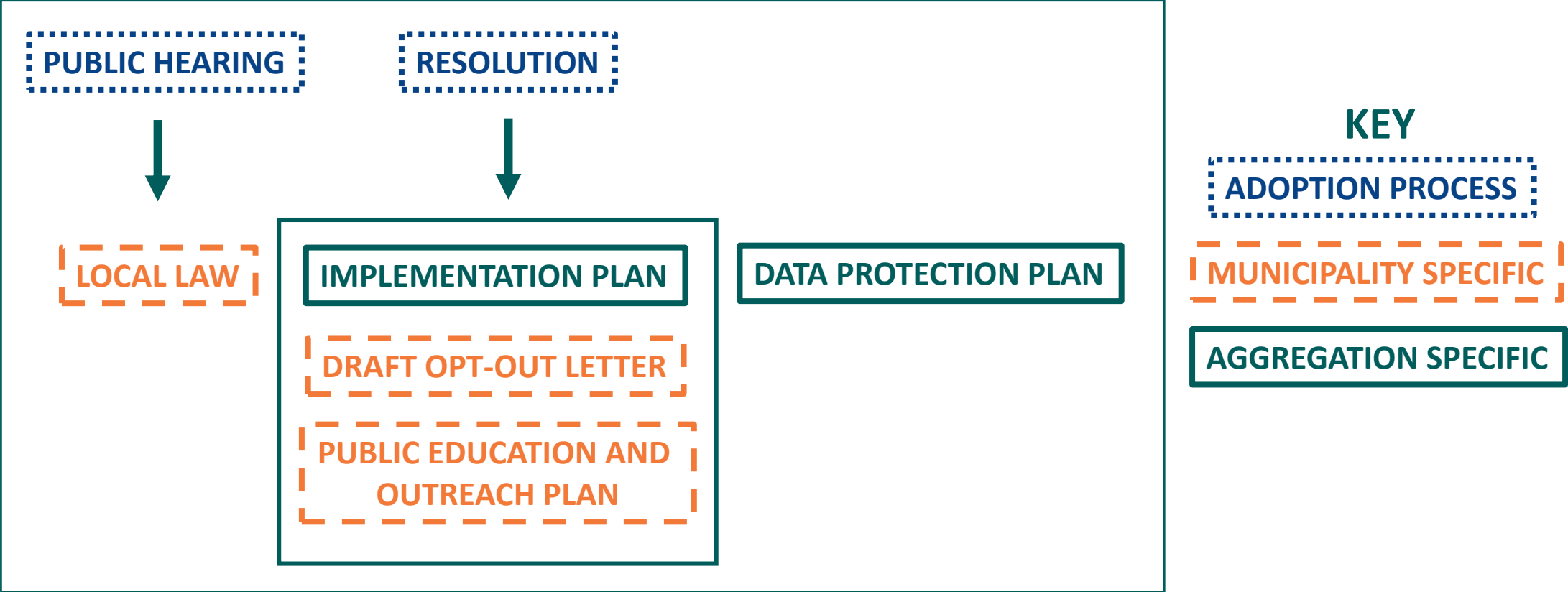

MEGA CCA EDUCATION: EXAMPLE DOCUMENTS

TABLE OF CONTENTS

1. **Graphic 1:** MEGA CCA Program Elements
Visual representation of CCA aggregation/generic elements and municipality-specific elements
2. **Graphic 2:** Town of Oneonta CCA Poster
Example poster explaining CCA and advertising public education sessions
3. **Graphic 3:** Town of Oneonta CCA Postcard
Copy of postcard mailed to all registered voter households explaining CCA and advertising public education sessions
4. **Graphic 4:** Town of Horseheads CCA Poster
Example poster explaining CCA and advertising public education sessions
5. **Graphic 5:** Town of Horseheads CCA Advertisement
Copy of paid advertisement announcing public education sessions
6. **Graphic 6:** MEGA's Seven Steps to a CCA Program
Educational material outlining MEGA's steps to a Community Choice Aggregation Program
7. **Graphic 7:** CCA FAQ for Residents
FAQ for residents of a municipality in NYSEG territory

Graphic 1

MEGA CCA Step 3: Local Law Adoption
Authorizing Community Choice Aggregation (CCA)



Your Electricity Future

Potential Benefits

1

LEARN



2

CHOOSE



3

ENJOY



The Power of Partnership
MEGA
MUNICIPAL ELECTRIC & GAS ALLIANCE



NOTICE OF PUBLIC MEETING



WHAT ?

Both the Town of Oneonta and Otsego County currently contract with MEGA (Municipal Electric and Gas Alliance) for energy supply. Through a new program called Community Choice Aggregation (CCA), MEGA can support residents. A CCA buys energy in bulk at a fixed price to save participants money. Town of Oneonta residents now have the opportunity to join MEGA's CCA. We would like to explore this opportunity on behalf of the town residents.

WHY ?

The Town Board would like to hear from you. Come voice your opinion and help us make an informed decision on your behalf.

THIS IS A “OPT OUT PROGRAM”

WHEN/WHERE	Tuesday May 2, 5-7pm	Thursday May 4, 5-7pm
	Town Hall 3966 St Hwy 23 West Oneonta NY 13820	Foxcare Education Center One Foxcare Drive Oneonta NY 13820

PLEASE ATTEND TO FIND OUT MORE

Graphic 3 Cont.



Town of Oneonta
PO Box A
West Oneonta, NY 13861

NOTICE OF PUBLIC MEETING

Your Electricity Future

Potential Benefits

1

LEARN



2

CHOOSE



3

ENJOY



The Power of Partnership
MEGA
MUNICIPAL ELECTRIC & GAS ALLIANCE

Graphic 5

The Town of Horseheads
is exploring a residential bulk
electricity purchasing program
called Community Choice
Aggregation (CCA).

The program is expected to
save residents money.

To learn more, please join us
at public education sessions
Wednesday, April 26th 1-2pm
or 5-7pm at the Town Hall.

Feel free to come
anytime and bring
your electric bill
and questions.



For more information:
www.megacca.org or 518.533.5399

Community Choice = Energy Savings



A Community Energy Program Through MEGA

NYS Public Service Commission has authorized local governments to aggregate utility customers for energy supply. Strength in numbers will lead to better energy pricing for all. Municipalities can join together through MEGA to gain market power.

MEGA will serve Villages, Towns and Cities as CCA Administrator, coordinating program design, community education and outreach, PSC compliance, competitive bidding and monitoring. County governments can facilitate inter-municipal cooperation.

MEGA's energy consultants have experience with CCA in 40 Illinois communities since 2012.

To learn more:

Louise Gava

315.714.9695

lgava@megaenergy.org



Seven **EASY** Steps to Community Choice Aggregation

1



Choose MEGA as CCA administrator

2



Educate the public

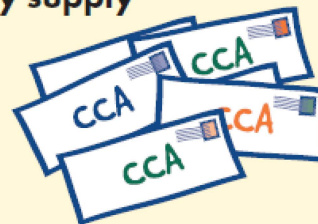
3



Adopt local law to authorize CCA

4

Competitive bid for energy supply



5



Select low-bid supplier

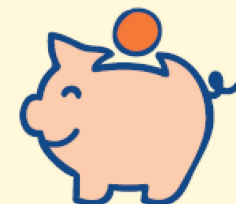
6



Citizens can opt-out

7

Savings begin



Learn more at: www.megaenergy.org



Community Choice Aggregation (CCA) FAQs for Residents

If you have a question that isn't answered below, please contact us at megaCCAteam@energynext.com or 518.533.5399

Q. What happens with my current utility?

A. Your electric bill has two main sections, delivery and supply. With a CCA you will still pay the delivery portion of your bill to your utility (e.g. NYSEG, National Grid), see example bill. The delivery portion includes funds to maintain infrastructure and address electricity outages.

Q. How do I know if the utility is my electric supplier?

A. Your electric bill has two main sections, delivery and supply. Check the supply portion of your bill to see if it lists the name of a company that is different from your utility, see example bill. If you receive two bills for your electric supply you have already selected a supplier other than the utility. If you are still not sure, contact us and we'll help you out.

Q. Can I join (opt-into) the CCA if I already selected a company other than the utility?

A. Yes, you can opt-into the CCA, but if you signed a contract for a certain length of time there may be a fee to terminate that contract. If the contract term is up, we welcome you to reach-out to us and we can help you join the CCA. Not sure if you have a contract with a termination fee, contact us and we'll help you out.

Q. Can I participate?

A. To get the benefits of CCA you must live within a city, town or village that is participating in the program. If your community is participating and you get your electric supply from the utility (e.g. NYSEG, National Grid) you will automatically be included in the CCA.

Q. Can my community participate?

A. Cities, towns and villages in New York State can participate in CCA. If you live in a village that is located within a town and the town is participating in the CCA, village residents - who are also residents of the town - are not automatically included, the village must also choose to participate. If you live in a municipal electric or electric cooperative CCA is not an option for your community at this time.

Q. What if I don't want to participate in the CCA?

A. CCA is all about choice and you have the opportunity to opt-out. If your community participates in CCA you will receive an opt-out letter. This letter will include information on the details of the CCA, including electricity price and terms, and provide information on multiple ways to opt-out. You have 30 days to opt-out.

Q. What if I don't opt-out within 30 days?

A. If you don't opt-out within 30 days you will be switched to the electric supplier for the CCA. You are still able to return to the utility for your electric supply without a penalty.

Q. What if I move?

A. If you move to another community participating in CCA you are able to join that group for the remainder of the term of the program.

Graphic 7 Cont.

Q. Where does the electricity come from?

A. Unless a community specifically requests the source of the electricity it will be generated from a variety of fossil fuel and renewable resources which could include natural gas, hydro and nuclear. It is possible for communities to request a CCA from 100% renewable sources, though this may cost more.

Q. Can I get renewable energy through the CCA?

A. It is possible for communities to request a CCA from 100% renewable sources (e.g. hydroelectric, wind, solar), though this may cost more. It is also possible for a percentage of the generation to come from renewable sources. For example, a CCA may still offer better rates and provide 60% renewable energy.

Q. What electric suppliers serve CCAs?

A. Third party electric services companies, ESCOs, will compete to win the business of the CCA. The ESCOs will be responding to a Request for Proposal (RFP) which outlines how much electricity they must supply and other requirements of the CCA.

Q. How can an ESCO offer a better rate than my utility?

A. Utilities must purchase electricity as it's used and pass through the cost to the customer. ESCOs can purchase hedges and other financial transactions allowing for more purchase options that can result in lower prices.

If you have a question that isn't answered above, please contact us at megaCCAteam@energynext.com or 518.533.5399

Example residential electric bill

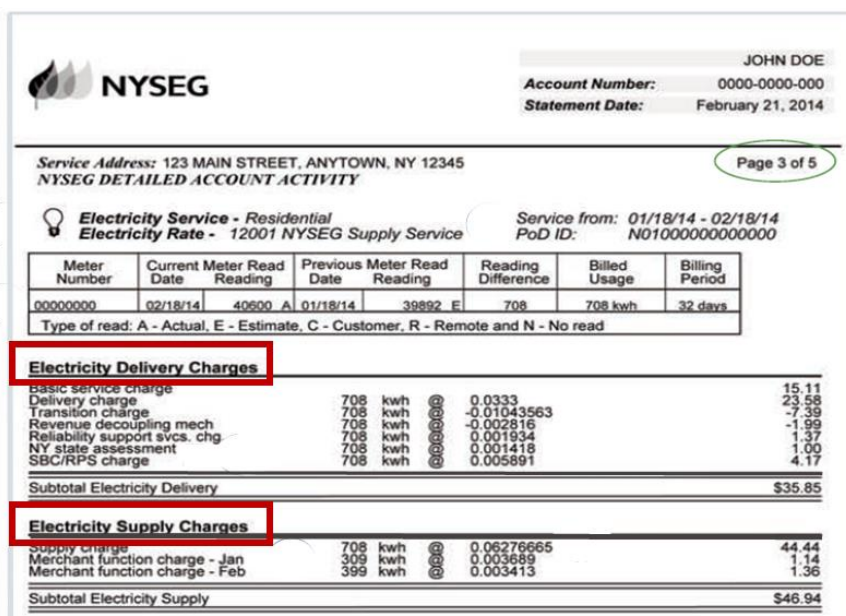
Your electric bill includes two main types of charges:

1. Delivery
2. Supply

With CCA:

1. Delivery: NYSEG will still be responsible for power outages and maintenance

2. Supply: best price will be chosen from multiple companies



The image shows a sample residential electric bill from NYSEG. The bill is for John Doe, with account number 0000-0000-000 and statement date February 21, 2014. The service address is 123 Main Street, Anytown, NY 12345. The bill is for the period 01/18/14 to 02/18/14. The meter number is 00000000, and the current meter reading is 40600. The previous meter reading was 39892. The billed usage is 708 kwh. The billing period is 32 days. The bill is divided into two main sections: Electricity Delivery Charges and Electricity Supply Charges. The delivery charges include a basic service charge of 15.11, a delivery charge of 23.58, a transition charge of -7.39, a revenue decoupling mechanism charge of -1.99, a reliability support services charge of 1.37, a NY state assessment of 1.00, and an SBC/RPS charge of 4.17. The subtotal for delivery charges is \$35.85. The supply charges include a supply charge of 44.44, a merchant function charge for January of 1.14, and a merchant function charge for February of 1.36. The subtotal for supply charges is \$46.94. The total bill amount is \$82.79.

Meter Number	Current Meter Read Date	Current Meter Read Reading	Previous Meter Read Date	Previous Meter Read Reading	Reading Difference	Billed Usage	Billing Period
00000000	02/18/14	40600 A	01/18/14	39892 E	708	708 kwh	32 days

Type of read: A - Actual, E - Estimate, C - Customer, R - Remote and N - No read

Electricity Delivery Charges				
Basic service charge				15.11
Delivery charge	708 kwh	@	0.0333	23.58
Transition charge	708 kwh	@	-0.01043563	-7.39
Revenue decoupling mech	708 kwh	@	-0.002816	-1.99
Reliability support svcs. chg	708 kwh	@	0.001934	1.37
NY state assessment	708 kwh	@	0.001418	1.00
SBC/RPS charge	708 kwh	@	0.005891	4.17
Subtotal Electricity Delivery				\$35.85

Electricity Supply Charges				
Supply charge	708 kwh	@	0.06276665	44.44
Merchant function charge - Jan	309 kwh	@	0.003689	1.14
Merchant function charge - Feb	399 kwh	@	0.003413	1.36
Subtotal Electricity Supply				\$46.94